

Turn and Find - Orange - Instructions 1:

(4 page never-ending folding card)

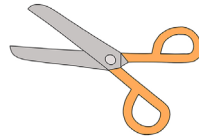
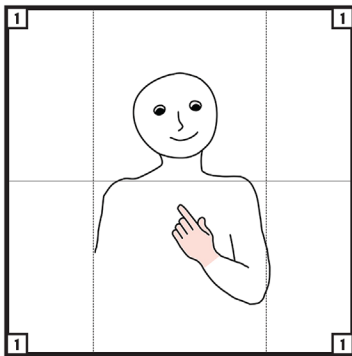
You will need:

- 4 sheets of card stock (8.5" x 11")
- glue stick
- scissors

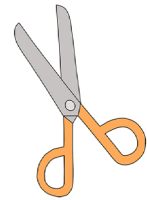
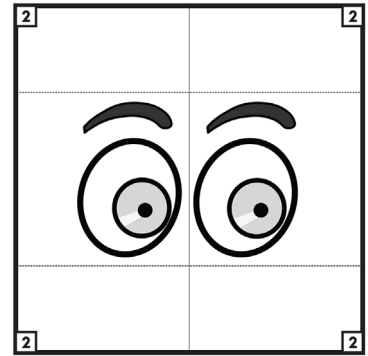
Steps:

- 1 - Print the four pages that follow the instructions.
- 2 - Cut out each page square.
- 3 - Cut each page square in half along the cutting line.

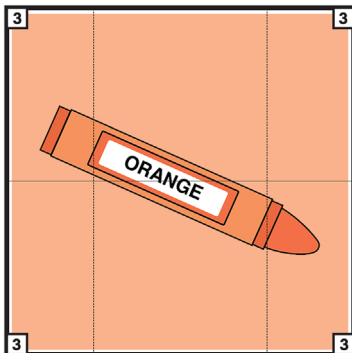
Page 1



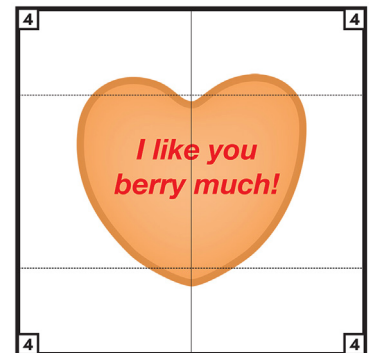
Page 2



Page 3



Page 4



Turn and Find - Orange - Instructions 2:

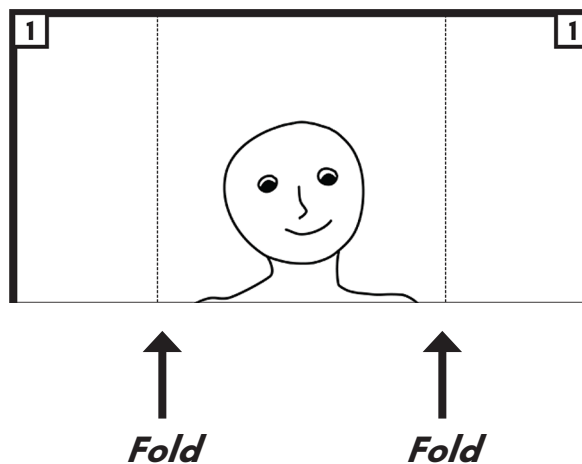
(4 page never-ending folding card)

Steps:

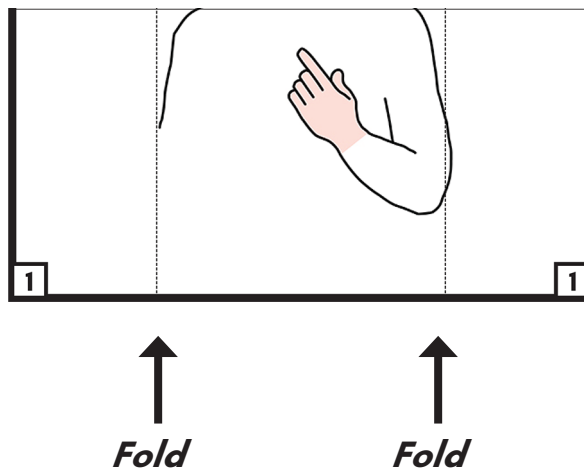
4 - Fold the ends of each half square (Page 1) in along the fold lines.

5 - Repeat for all other pieces (Page 2, Page 3, Page 4).

**Page 1
Top**



**Page 1
Bottom**

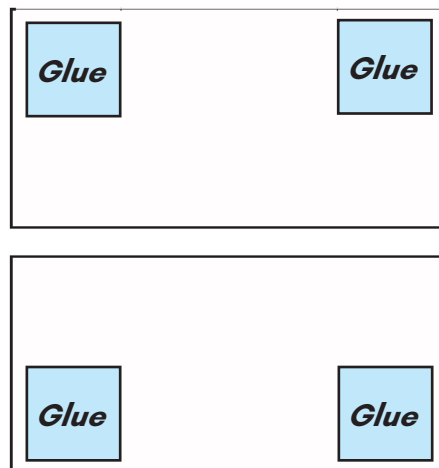
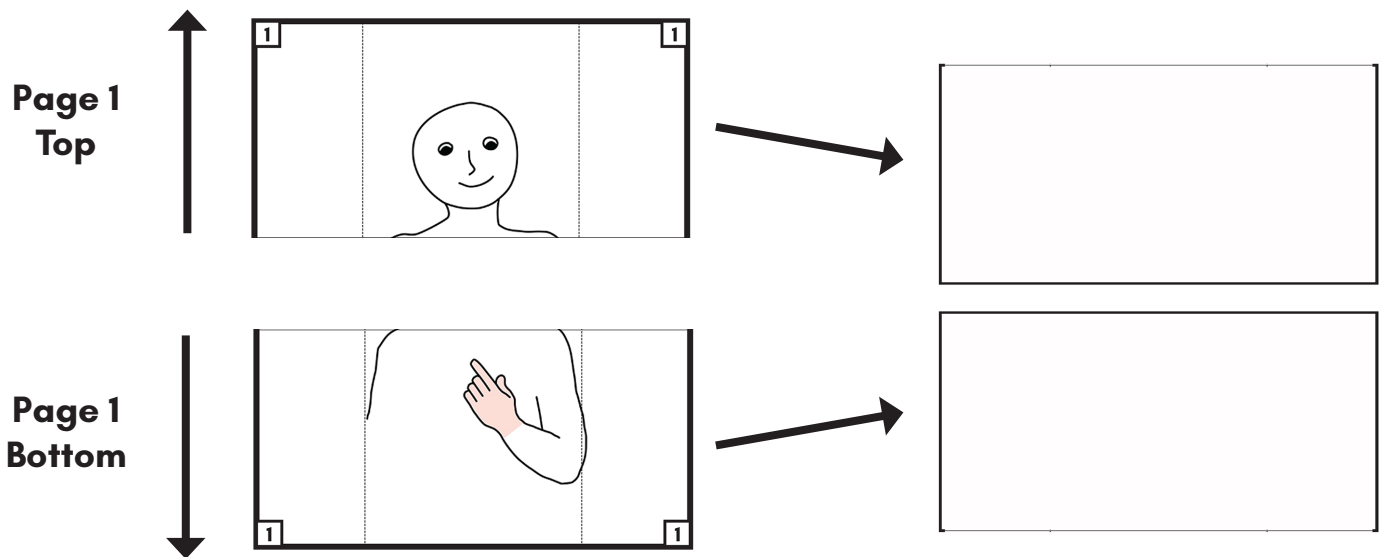


Turn and Find - Orange - Instructions 3:

(4 page never-ending folding card)

Steps:

- 6 - Place Page 1 parts (top and bottom) face up (numbers in outside corners).
- 7 - Turn the top of Page 1 up and over (face down).
- 8 - Turn the bottom of Page 1 down and over (face down).
- 9 - Bring the upside down pieces close together.
- 10 - Put glue on the 4 corners.



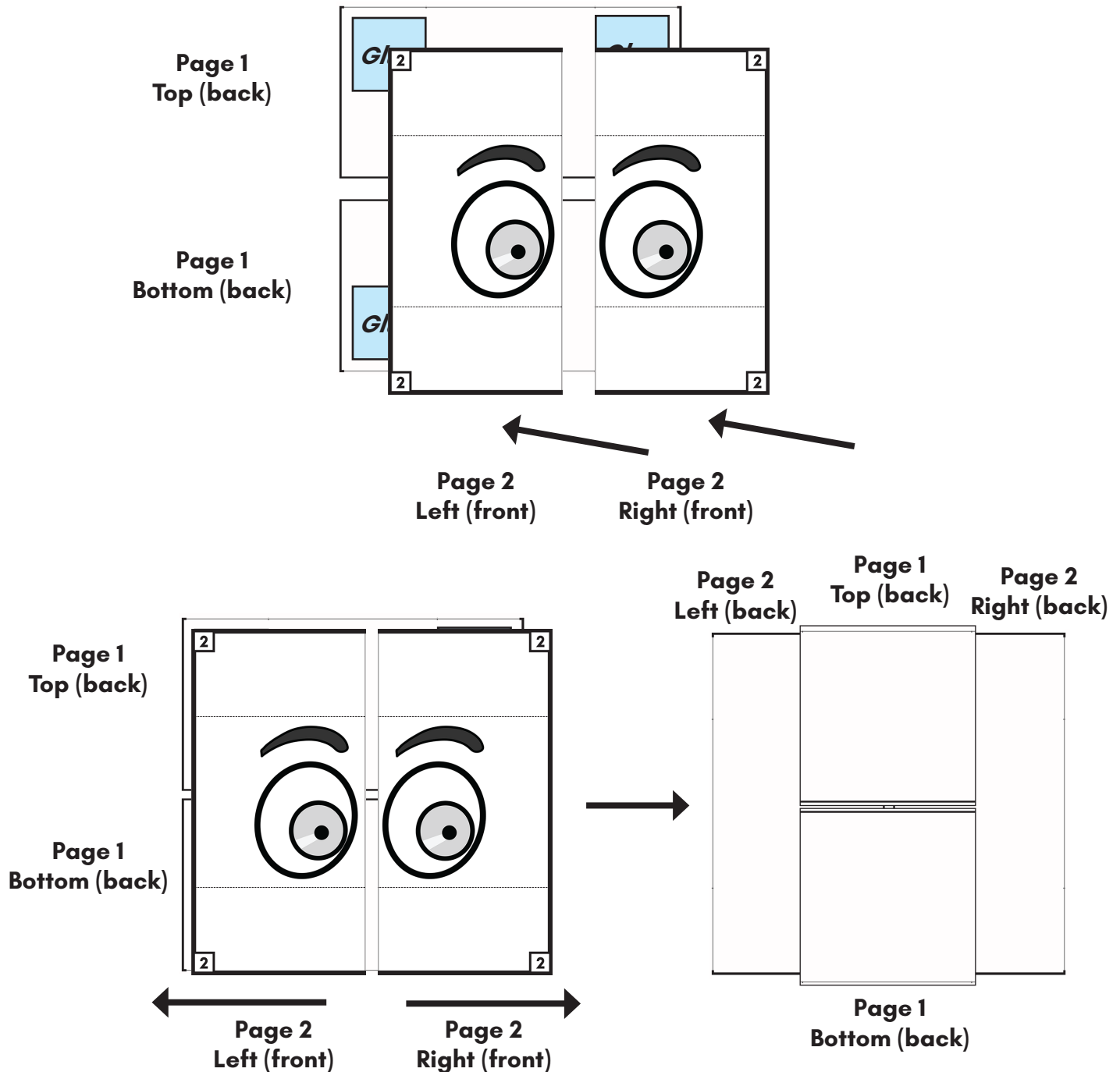
Turn and Find - Orange - Instructions 4:

(4 page never-ending folding card)

Steps:

11 - Place Page 2 pieces (left and right) on the glue (face up / numbers right side up in the outside corners).

12 - Turn the page 2 pieces (left and right) out, over, and under (face down) along the fold lines.



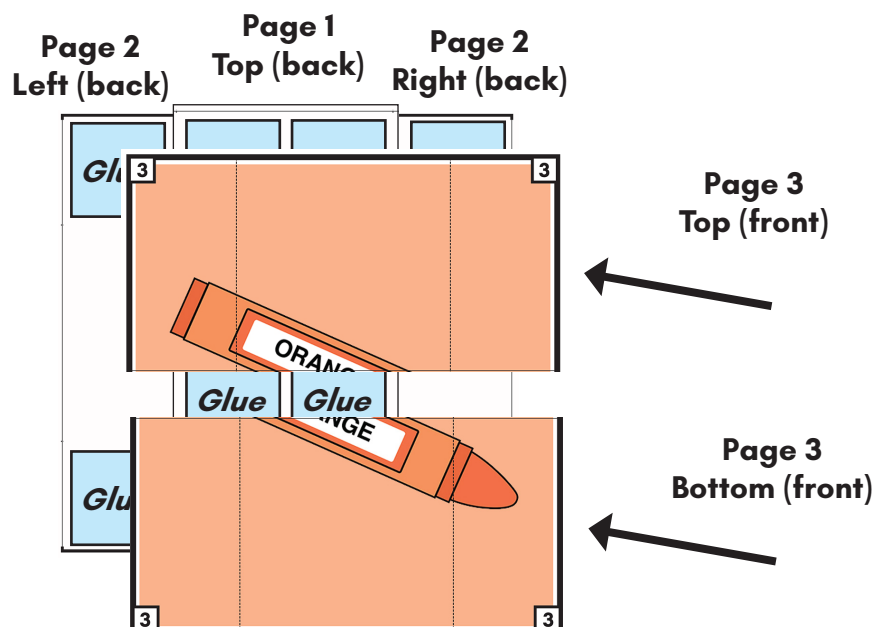
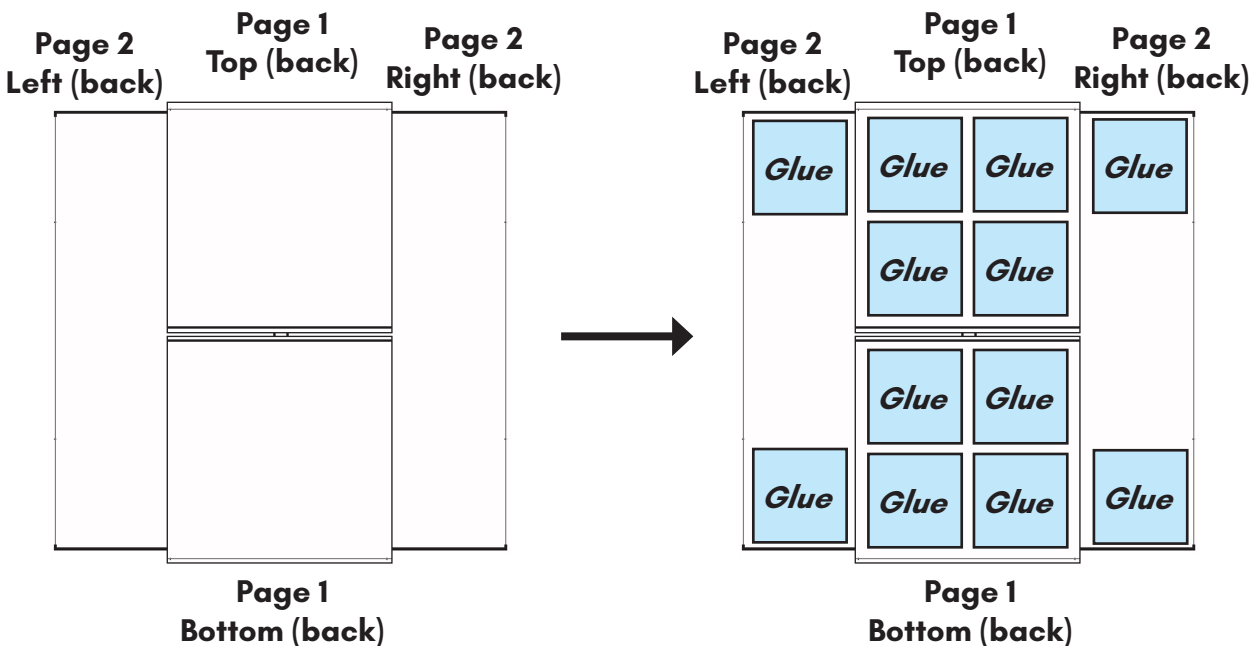
Turn and Find - Orange - Instructions 5:

(4 page never-ending folding card)

Steps:

13 - Put glue on the 4 corner squares and the two large squares in the middle.

14 - Place page 3 pieces (top and bottom) on the glue (face up / numbers right side up in the outside corners).



Turn and Find - Orange - Instructions 6:

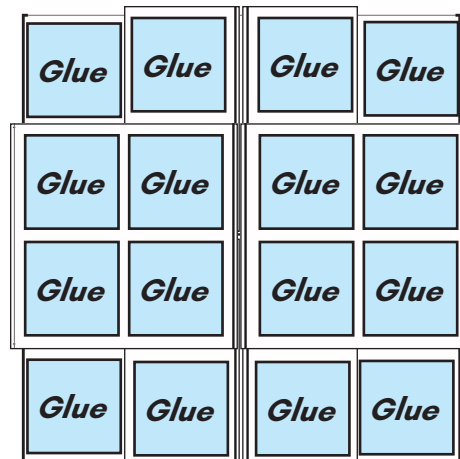
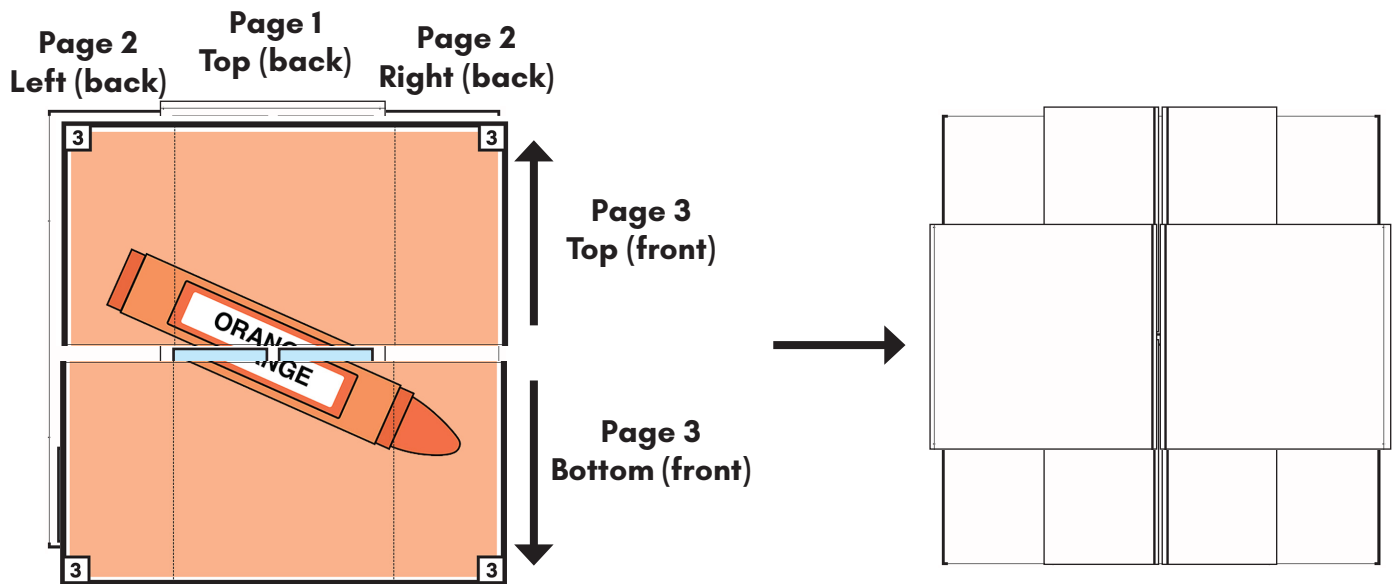
(4 page never-ending folding card)

Steps:

15 - Turn the top piece of Page 3 up, over, and under (face down) along the fold lines.

16 - Turn the bottom of Page 3 down, over, and under (face down) along the fold lines.

17 - Put glue on all pieces.



Turn and Find - Orange - Instructions 7:

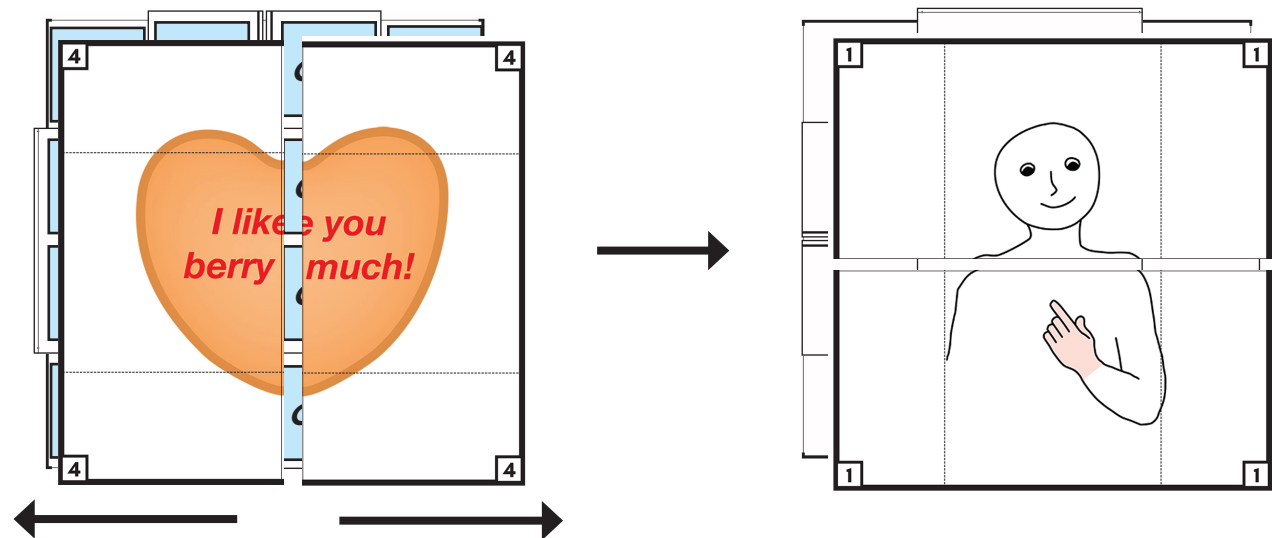
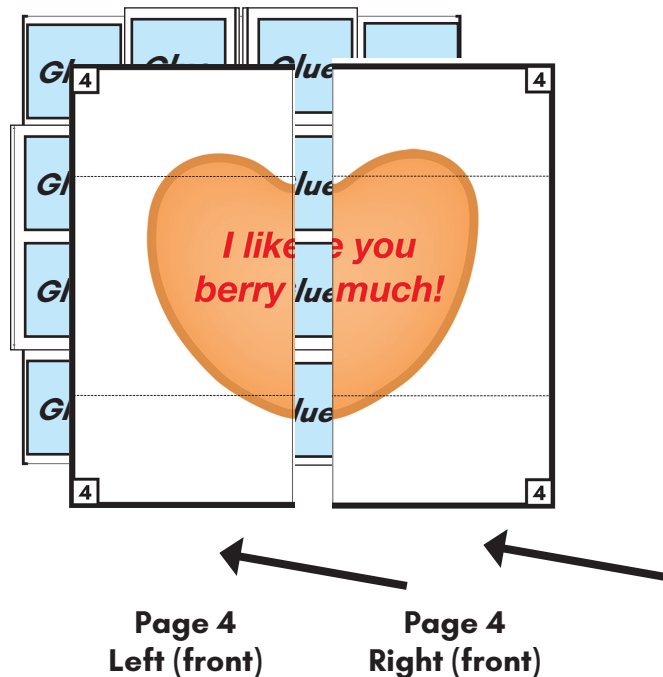
(4 page never-ending folding card)

Steps:

18 - Place Page 4 pieces (left and right) on the glue (face up / numbers right side up in the outside corners).

19 - When glue is dry, turn the Page 4 pieces (left and right) out, over, and under (along the fold lines).

20 - Always begin with Page 1 and numbers in the outside corners. Turn the pages to find out what is next!



Valentines Day Candy Hearts

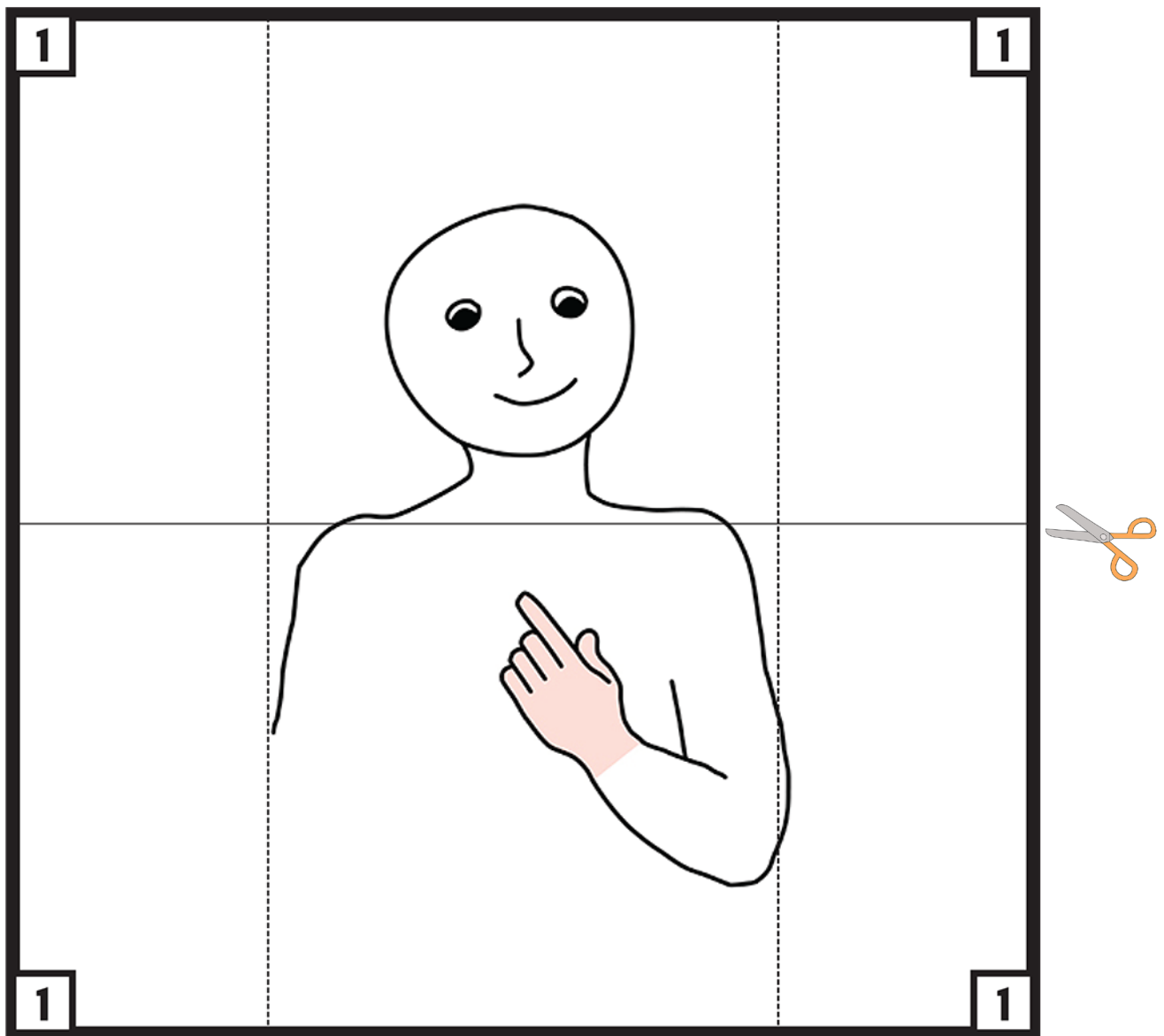
Turn and Find - Orange - Print Page 1:

(4 page never-ending folding card)

Print and trim. Cut in half along cutting line. Fold the ends in on each piece using fold lines. Follow instructions for assembly.

Valentines Day Candy Hearts-Orange

Page 1

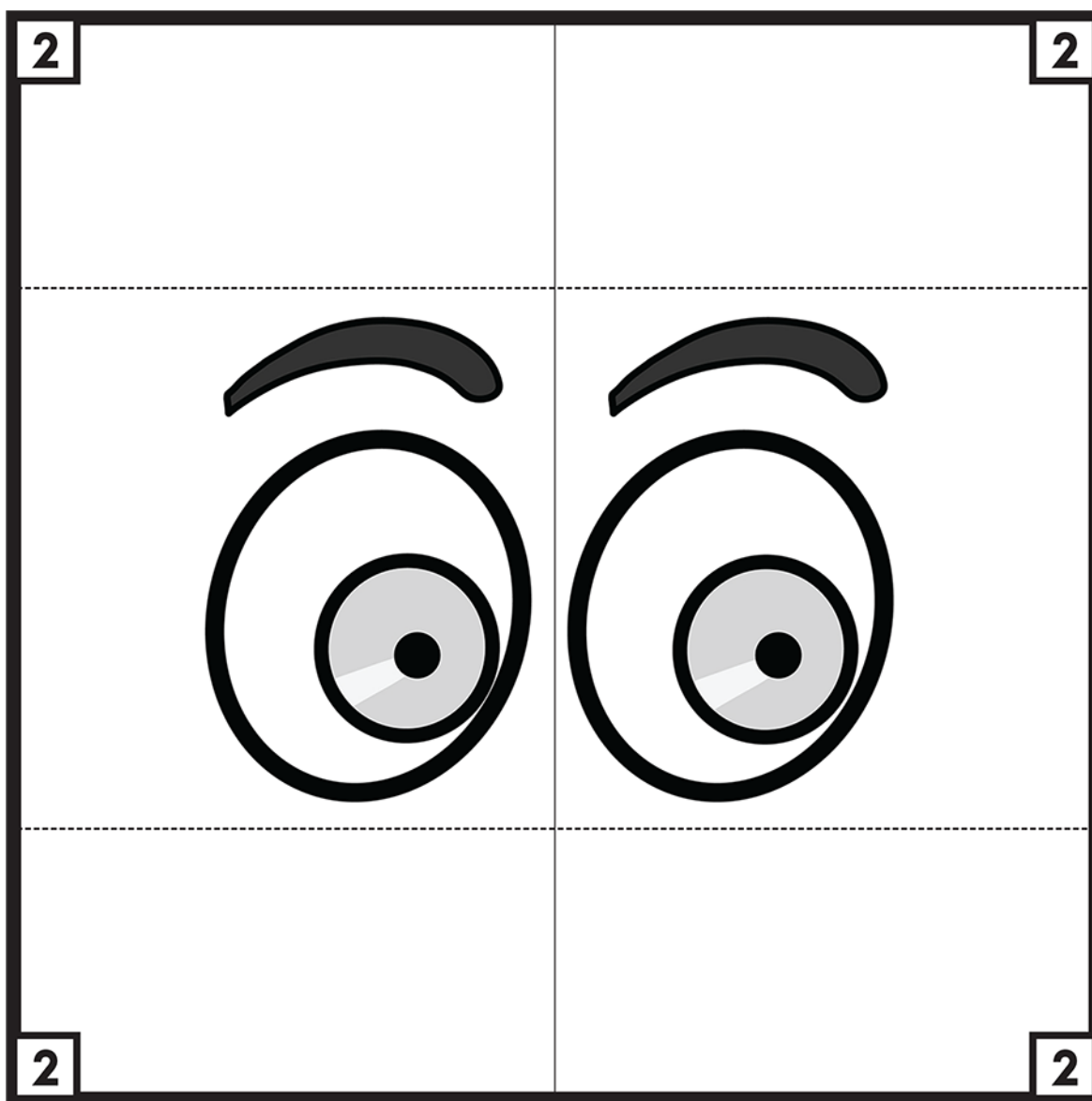


Turn and Find - Orange - Print Page 2:

(4 page never-ending folding card)

Print and trim. Cut in half along cutting line. Fold the ends in on each piece using fold lines. Follow instructions for assembly.

Valentines Day Candy Hearts-Orange Page 2

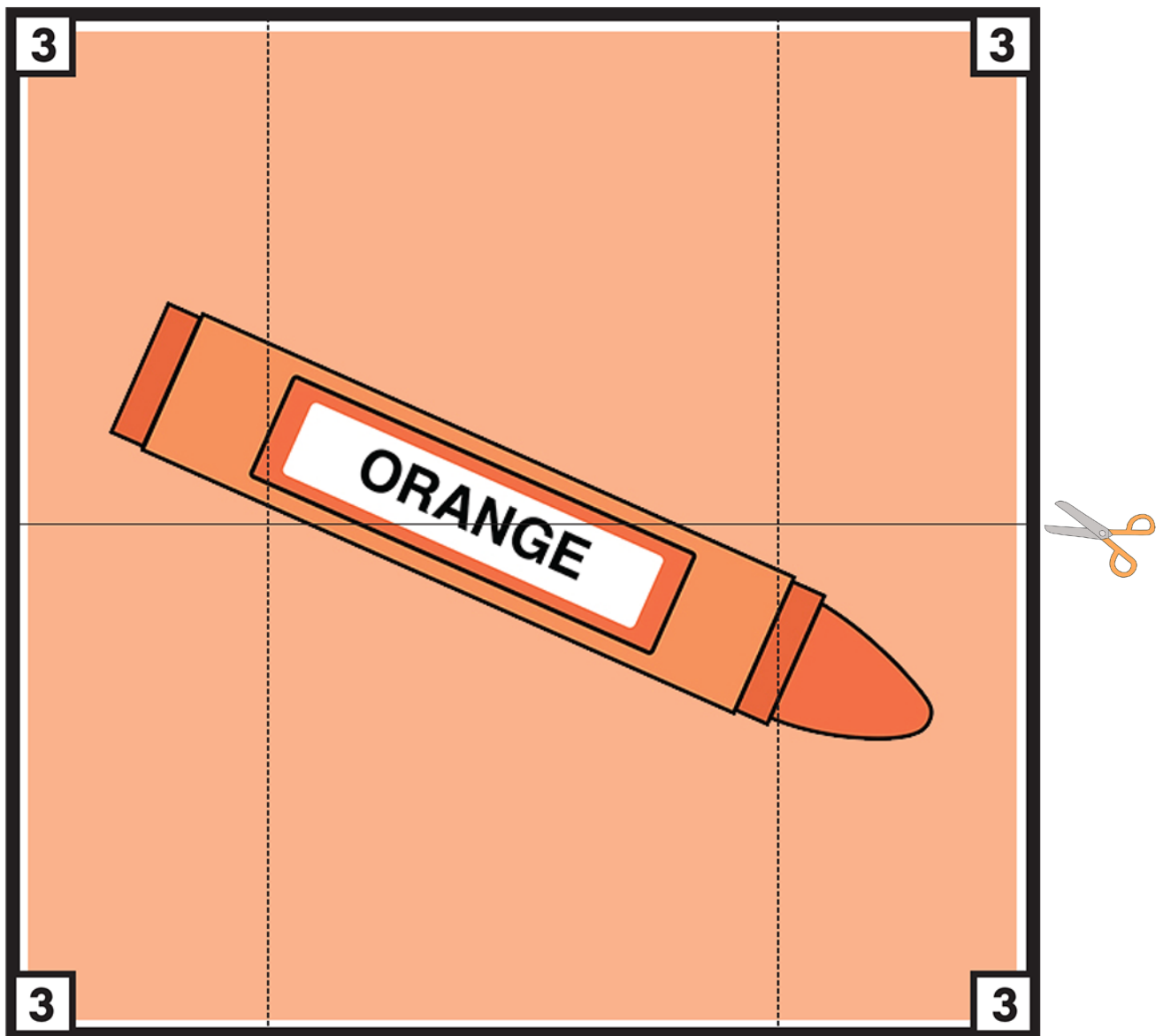


Turn and Find - Orange - Print Page 3:

(4 page never-ending folding card)

Print and trim. Cut in half along cutting line. Fold the ends in on each piece using fold lines. Follow instructions for assembly.

Valentines Day Candy Hearts-Orange Page 3



Turn and Find - Orange - Print Page 4:

(4 page never-ending folding card)

Print and trim. Cut in half along cutting line. Fold the ends in on each piece using fold lines. Follow instructions for assembly.

Valentines Day Candy Hearts-Orange Page 4

